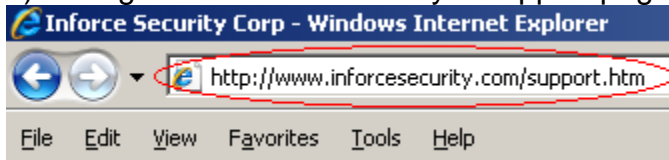


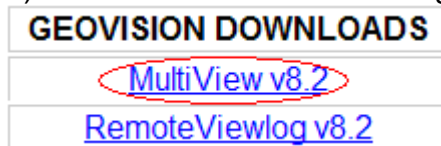


Installing DMMultiView: (for live viewing of all your surveillance cameras)

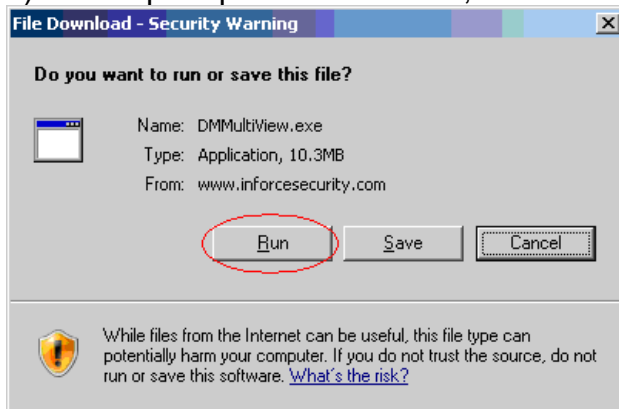
- 1) Navigate to Inforce Security's Support page at www.inforcesecurity.com/support.htm



- 2) Under the Software heading, click MultiView vX (X represents the latest version available)



- 3) When prompted to download, click Run

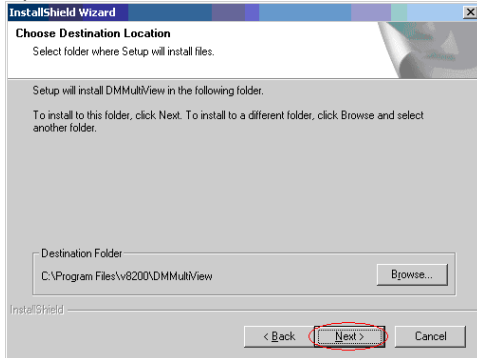


- 4) When the security warning appears, continue the install by clicking Run

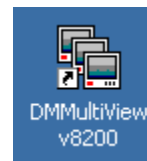




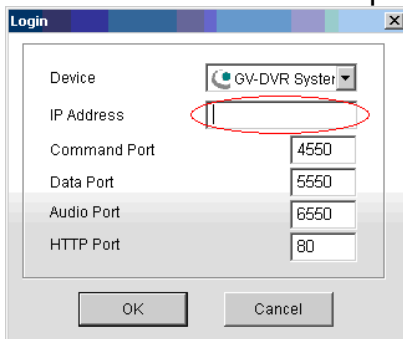
5) Click Next to install to the default destination folder (recommended)



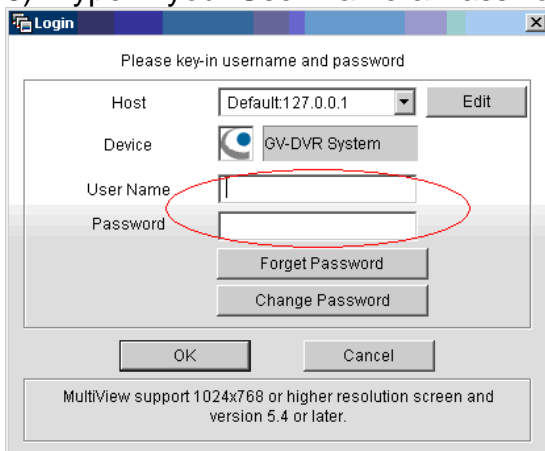
6) After MultiView installs, an icon will appear on your desktop. Double click the icon to run the program



7) The Login screen will appear, click the Edit button and type in your DVR address i.e. YourBusinessName.dipmap.com, then click OK



8) Type in your User Name & Password, then click OK



Congratulations, you can now live view all of your camera's & audio devices online!