

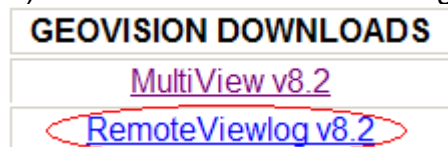


Installing ViewLog: (for playback of all your recorded surveillance video)

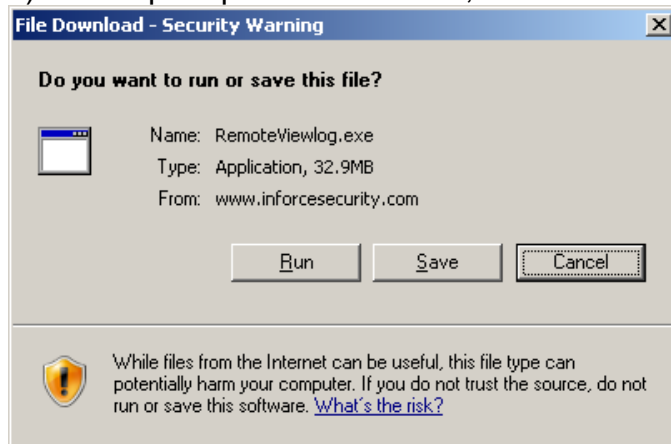
- 1) Navigate to Inforce Security's Support page at www.inforcesecurity.com/support.htm



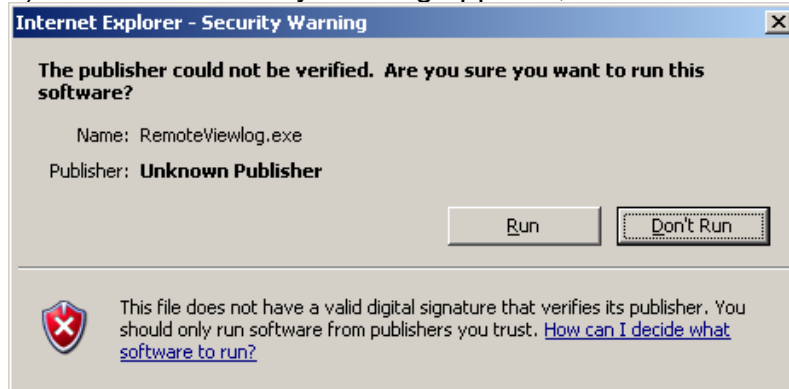
- 2) Under the Software heading, click RemoteViewlog vX (X represents the latest version available)



- 3) When prompted to download, click Run

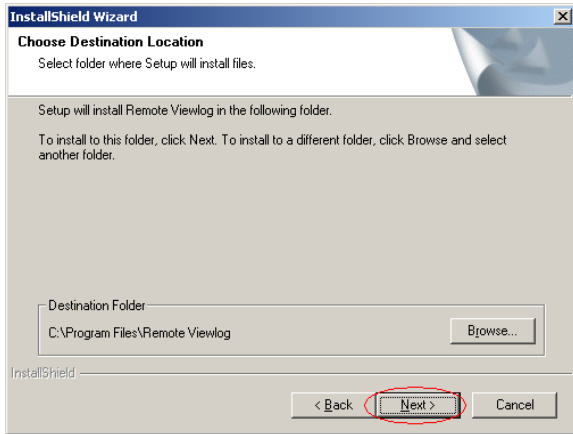


- 4) When the security warning appears, continue the install by clicking Run





- 5) Click Next to install to the default destination folder (recommended)



- 6) If prompted for the DISPLAY RESOLUTION size, select the resolution of your computer monitor display.

If you are not sure of the resolution of your display, select 1024 x 768 which is the lowest resolution that is compatible with most monitors.

- 6) After the program installs, the icon will appear under the Windows Start menu. Click Start, Programs, then find the folder Remote Viewlog, then click & hold the right mouse button over the program icon called Remote Viewlog and without releasing the right mouse button drag it onto your desktop. Release the mouse button and select Copy Here. You now have a shortcut to the program on your desktop.

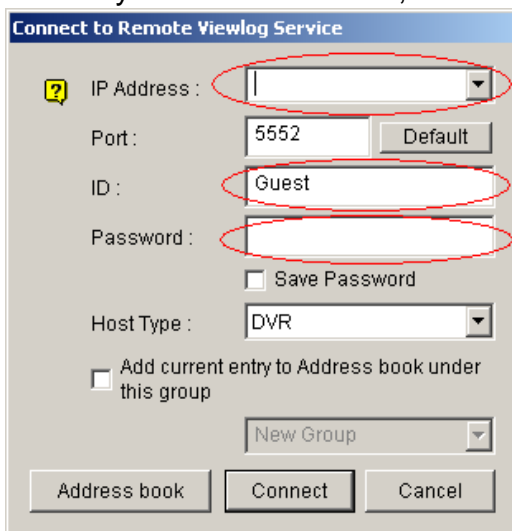


- 7) Double click the Remote Viewlog icon on your desktop to launch the program

- 8) When Viewlog Opens, you get a choice of 2 startup options, choose the TOP option for "Remote Viewlog Service".

Remote Viewlog Service
Remote Storage System

- 9) The logon window will appear, type your DVR address i.e. YourBusinessName.dipmap.com, and your ID & Password, and click Connect



Initial DataBase... 3 %

- 10) An Initial DataBase box will come up while you wait for the database to load, when it reaches 100% you will be ready to select video files for playback from the database tree that will pop up on the right hand side of the screen.