



LIVE VIEW TUTORIAL v8.31

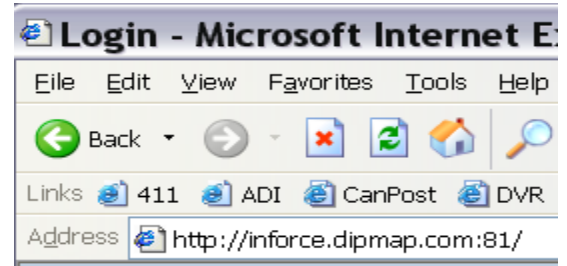


- 1) From a computer connected to the Internet, run your Internet Explorer web browser:

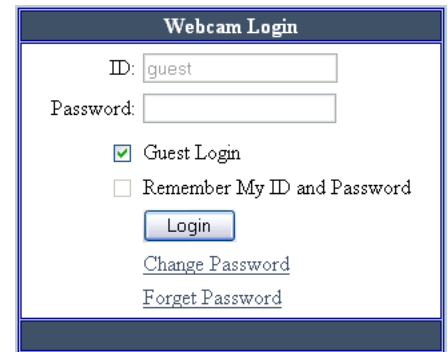
Internet Explorer

- 2) Click the address bar and type the address of the DVR you are connecting to:

For the DEMO use:
http://inforce.dipmap.com:81



- 3) At the login screen, type your username and password then click the Login button. **For the DEMO click the Guest Login box.**



- 1) 4) If this is your first time connecting, be patient for the drivers to automatically install, if you are using Windows Vista, you may have to click ALLOW to unblock the drivers from installing. Once they are installed, the video will begin to show and you can change cameras by clicking the second icon down from the top right of the video window as illustrated below:

