



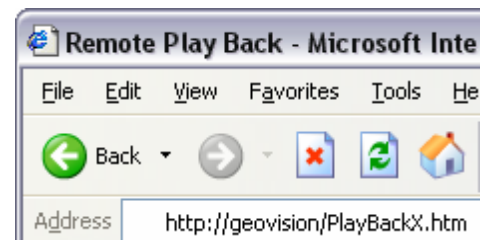
DVR PLAYBACK TUTORIAL

- 1) From a computer connected to the Internet, run your Internet Explorer web browser:



- 2) Click the address bar and type the address of the DVR you are connecting too:

For the DEMO use:
<http://205.210.53.98/PlayBackX.htm>



- 3) Wait until the Remote Play Back Web interface loads, and then click on the PLAY button to login.



- 4) At the login prompt, enter your username and password as provided to you and click OK.

For the DEMO type:
Username: demo
Password: demo

If "Login Success!!" is displayed above the view screen then you are ready to download the Date List.



- 5) Click the "Get Date List" icon (third one from the bottom right) and then select "Get Date List" from the pullout.

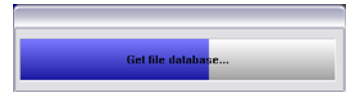




INFORCE SECURITY CORP.

DIGITAL VIDEO RECORDING AND SURVEILLANCE
BURGLAR, SMOKE AND INTRUSION DETECTION

6) Wait for the Date List to load, this will take a moment, when it is done, you will see the list to the right hand side will be populated with all your motion detected events.



7) First, select the Channel (*camera*) you wish to view from the Channel Select Tab ③. Second, Click the [+] next to the Year, then Month, then Day of the event you wish to view ①. Once you have selected the Day, a list of available events will be displayed in the Event List ② Select an event and then click the play button ⑩



| No | Name | Description |
|----|--------------------|---|
| 1 | File Tree | Displays date folders. |
| 2 | Event List | Displays the video events |
| 3 | Channel Select Tab | Selects different channels. |
| 4 | Option | Includes the Enable DirectDraw option. |
| 5 | Object Search | Searches Object Index. |
| 6 | Get Event List | Displays the Event List. |
| 7 | Smart Search | Includes the Advanced Search option. |
| 8 | Audio | Enables live audio from the remote GV-System. |
| 9 | Pause | Pauses the video file. |
| 10 | Play | Plays the video file. |
| 11 | Stop | Stops the video file. |
| 12 | Download | Downloads the video file. |
| 13 | Snapshot | Takes a snapshot of the displayed live video. |
| 14 | Full Screen | Switches to a full screen view. |